

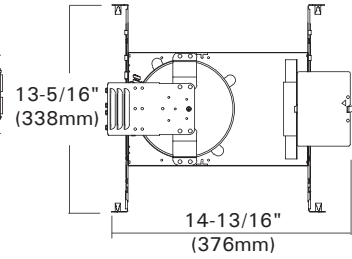
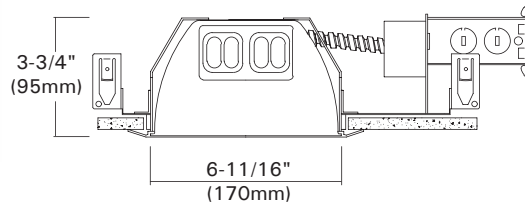
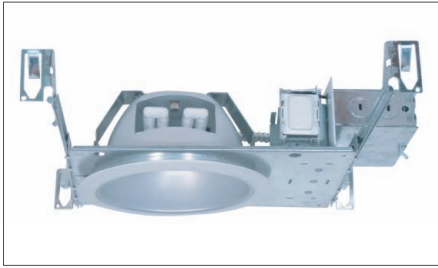
# DLF-723

## 6" Super Shallow Housing For

(1) or (2) DTT & (1) TTT

Catalog #		Type
Project		Date
Prepared by		

### FLUORESCENT



### DESCRIPTION

Ceiling Cut-out : 6-7/8"  
Lamp, Max, Watt. : (1)42W or (2)26W

The 6" aperture super shallow housing for wide beam distribution and high efficiency by (1) or (2) horizontal CFL lamps.  
The DLF-723 offers a wide choice of trim types including reflector lensed.

### DESIGN FEATURES

#### Mounting Frame

- Galvanized steel construction.
- Housing adjusts for cilings up to 1-1/4" thick.

#### Junction Box

- Listed for through branch circuit wiring.(Max.8 No 12 AWG 90°C branch circuit conductors. (4 in, 4 out)
- (5)1/2" knockouts with true pry-out slots and (4) knockouts with Romex cable clamp.
- Ground wire provided on J-box.

#### Trim Ring

- White plastic ring or self flanged chrome, satin nickel, polished brass.

#### Socket

- G24Q/GX24Q socket for use 4 pin DTT, TTT lamps.

#### Socket Housing

- Installed lampholders in socket housing attached on the reflector top.

#### Bar hangers

- 24" Bar Hangers provide stability and support on joists and T-Bar Grid ceilings.
- Housing can be positioned at any point within 24" joist span.
- Score lines allow "toolless" shortening for 12" joists. Bar hangers may be repositioned 90 degrees.
- Integral T-bar clips snaps onto T-bars and no additional clips are required.

#### Lamp

- Compact Fluorescent lamps.
- \* DTT-Double twin tube (Quad/CFQ)
  - (2) 13W DTT (4 pin)
  - (2) 18W DTT (4 pin)
  - (2) 26W DTT (4 pin)
- \* TTT-Triple Twin Tube (CFTR)
  - (1) 26W TTT (4 pin)
  - (1) 32W TTT (4 pin)
  - (1) 42W TTT (4 pin)

#### Ballast

- Class P Thermally protected by internal fuse (3 amp fast blow), Multi-volt electronic ballast or thermal cut-out switch in magnetic ballast.
- High Power Factor Multi-volt Electronic ballasts for 4 pin type compact fluorescent lamps mounted on J-box door for easy access from inside of fixture.

#### Listing

- UL, c-UL listed for damp location.
- UL, c-UL listed for feed through.

#### Optional "Quick Connect" Push-in wire connectors.

- Three "Quick Connectors"
- Pre-installed push-in wire connectors for fast and easy wiring.

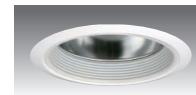
### Trims



TM-29R

**Full Open Reflector**  
**Max. 2x26W DTT,**  
**Max. 1x42W DTT, TTT**

White Plastic Trim Ring  
O.D : 7-7/8"



TM-20B

**Baffle w/ Reflector**  
**Max. 2x26W DTT,**  
**Max. 1x42W DTT, TTT**

White Plastic Trim Ring  
O.D : 7-7/8"



TM-26R

**Reflector w/ Fresnel Lens**  
**Max. 2x26W DTT,**  
**Max. 1x42W DTT, TTT**

White Plastic Trim Ring  
O.D : 7-7/8"



TM-26B

**Baffle w/ Fresnel Lens**  
**Max. 2x26W DTT,**  
**Max. 1x42W DTT, TTT**

White Plastic Trim Ring  
O.D : 7-7/8"

- ◆ White plastic ring standard. Also available with metal rings.
- ◆ All trims are damp location, Lens trims are wet location listed.

### Ordering Information

Housing	Ballast	Lamp(s) Watt.	Option
DLF-723	-N : 120V NPF Magnetic -H : 120V HPF Magnetic -NE : 120V NPF Electronic -HE : 120V HPF Electronic -E : 120V/277V HPF Electronic	113 : (1)13W    142 : (1)42W 118 : (1)18W    213 : (2)13W 126 : (1)26W    218 : (2)18W 132 : (1)32W    226 : (2)26W	-EM : Emergency w/ Remote Test Switch -C: Quick Connectors

Example : DLF-723-E226